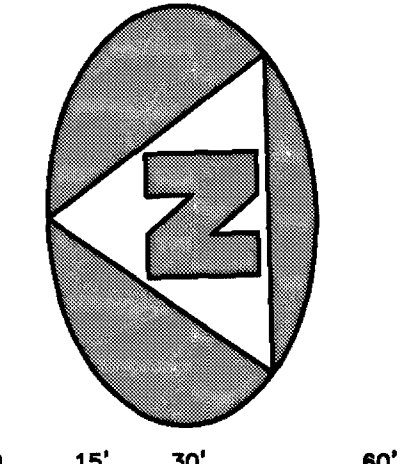


SOUTH ROAD OFFICE MUPD

BEING A REPLAT OF PARCEL B, SOUTH ROAD/441, ACCORDING TO THE PLAT THEREOF, AS RECORDED IN PLAT BOOK 108, PAGE 3, PUBLIC RECORDS OF PALM BEACH COUNTY, FLORIDA, LYING IN SECTION 36, TOWNSHIP 44 SOUTH, RANGE 41 EAST, PALM BEACH COUNTY, FLORIDA

149



GRAPHIC SCALE
(IN FEET)
SCALE 1" = 30'

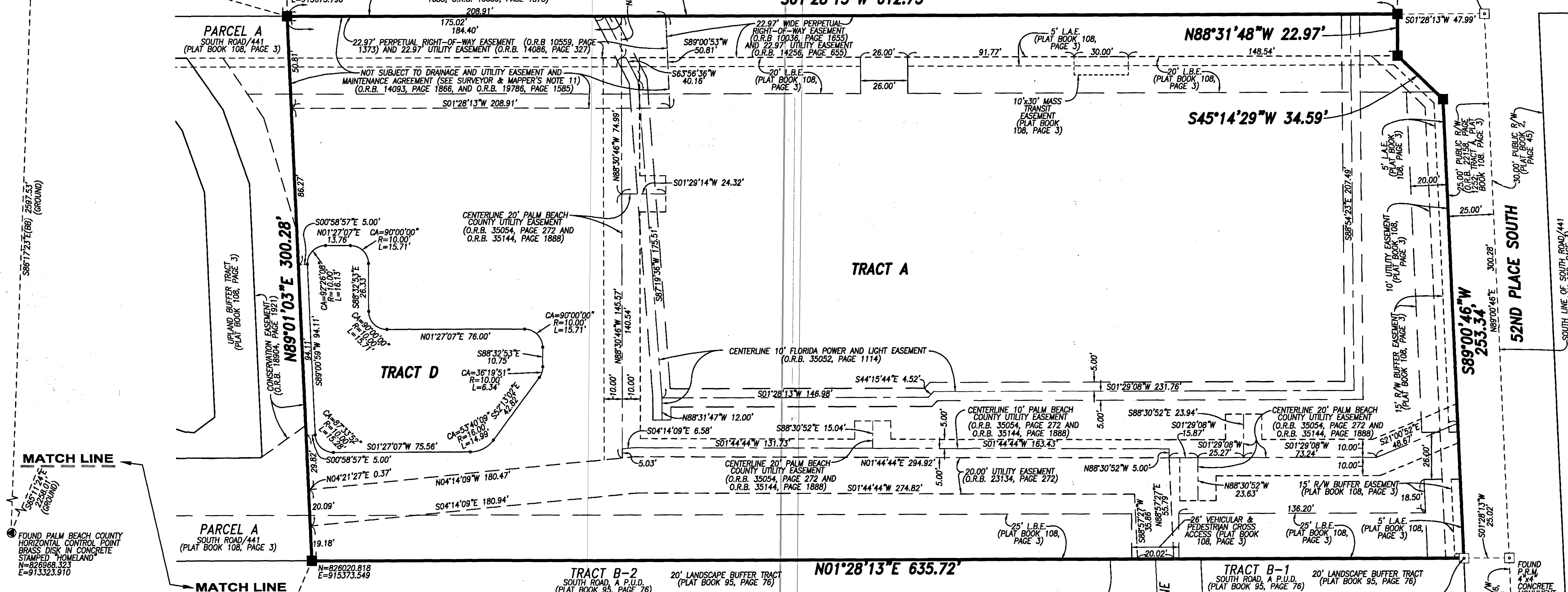
LEGEND	
■	SET PERMANENT REFERENCE MONUMENT - 4"x4" CONCRETE MONUMENT WITH NAIL & WASHER STAMPED "PRM LB7344"
□	FOUND PERMANENT REFERENCE MONUMENT
CA	CENTRAL ANGLE
CB	CHORD BEARING
CD	CHORD DISTANCE
C/L	CENTERLINE
L	ARC LENGTH
L.A.E.	LIMITED ACCESS EASEMENT
L.B.E.	LIMITED BUFFER EASEMENT
O.R.B.	OFFICIAL RECORDS BOOK
P.R.M.	PERMANENT REFERENCE MONUMENT
R	RADIUS DISTANCE
R/W	RIGHT-OF-WAY

NORTHEAST CORNER OF SECTION 36, TOWNSHIP 44 SOUTH, RANGE 41 EAST
 FOUND I.R.C. LB7055
 N=826800.232
 E=915816.048 (GROUND)
 S01°27'15"W 2677.72'

EAST QUARTER CORNER OF SECTION 36, TOWNSHIP 44 SOUTH, RANGE 41 EAST
 PALM BEACH COUNTY PUBLISHED POSITION (NOT FOUND)
 N=824133.328
 E=915848.090

EAST LINE OF SECTION 36, TOWNSHIP 44 SOUTH, RANGE 41 EAST
 N17°22'26"E 817.28' (GROUND)

STATE ROAD 7 (U.S. 441)
 (PUBLIC R/W WIDTH VARIES PER FDOT R/W MAP 93210-2525)
 (DEED BOOK 641, PAGE 368; O.R.B. 10051, PAGE 1356; O.R.B. 10036, PAGE 1655; O.R.B. 10559, PAGE 1373; O.R.B. 8813, PAGE 1545)



MATCH LINE
 S86°17'23"E 2597.53' (GROUND)
 S86°17'23"E 2597.53' (GROUND)
 FOUND PALM BEACH COUNTY HORIZONTAL CONTROL POINT BRASS DISK IN CONCRETE STAMPED "HOMELAND"
 N=826968.323
 E=915323.910

NOTES
COORDINATES, BEARINGS AND DISTANCES:

- BEARINGS SHOWN HEREON ARE RELATIVE TO THE NAD 83 (1990 ADJUSTMENT) STATE PLANE GRID BEARING OF S86°17'23"E ALONG THE LINE BETWEEN PALM BEACH COUNTY HORIZONTAL CONTROL POINT "HOMELAND" AND THE NORTHEAST CORNER OF SECTION 36, TOWNSHIP 44 SOUTH, RANGE 41 EAST.
- THE COORDINATES SHOWN HEREON ARE STATE PLANE GRID COORDINATES ACCORDING TO THE TRANSVERSE MERCATOR PROJECTION OF THE FLORIDA EAST ZONE, NAD 83 (1990 ADJUSTMENT).
- THE LINEAR DIMENSIONS SHOWN HEREON ARE GROUND DISTANCES IN U.S. FEET AND DECIMAL PARTS THEREOF, UNLESS NOTED OTHERWISE.
- THE GROUND DISTANCE TO GRID DISTANCE SCALE FACTOR IS 1.000018534 (GROUND DISTANCE X SCALE FACTOR = GRID DISTANCE)

PREPARING SURVEYOR & MAPPER'S STATEMENT
 THIS INSTRUMENT WAS PREPARED BY STEPHEN L. SHIRLEY, PROFESSIONAL SURVEYOR AND MAPPER NO. 3918, IN AND FOR THE OFFICES OF ASSOCIATED LAND SURVEYORS, INC., 3200 SUMMIT BLVD #19717, WEST PALM BEACH, FL 33416

ASSOCIATED LAND SURVEYORS, INC.
 3200 SUMMIT BLVD #19717
 WEST PALM BEACH, FL 33416
 PHONE: (561) 848-2102 FAX: (561) 844-9659
 LB NO. 7344 EMAIL: als@allsurvey.net